



BUMIARMADA



PROPOSAL: OPL 245 ETAN EXECUTION STRATEGY



INTRODUCTION

Nigerian Agip Exploration Limited (NAE) and Shell Nigeria Exploration and Production Company (SNEPCo) are in the process of developing NAE Deep offshore block located approximately 150 kilometers offshore Nigeria. In particular, the block is a 1,958 km² block license located in the deep-water eastern portion of the Niger Delta in Nigeria, with water depths ranging from 1,200 to 2,400 m.

The block comprises two discoveries, **Zabazaba** and Etan, which are separated by a significant seafloor canyon. The field is in about 1,950 m water depth and the distance between Zabazaba and Etan is about 30/40 km.

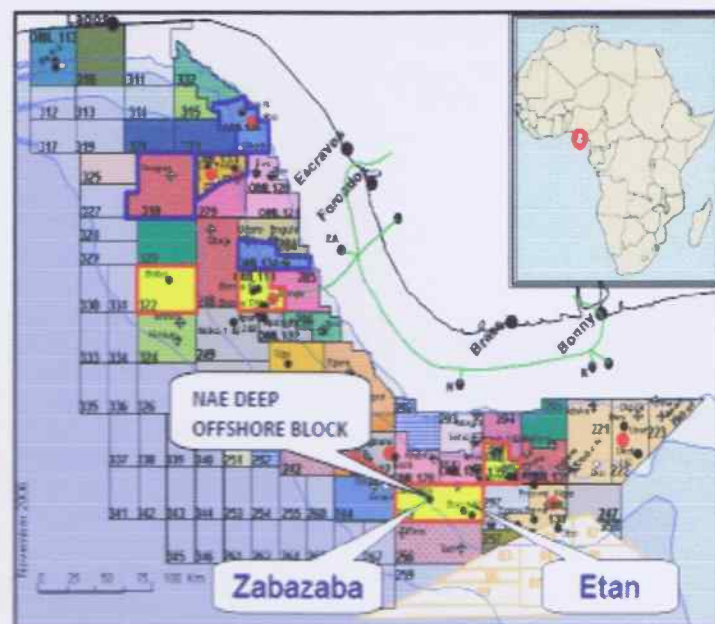


Figure 1 – NAE Deep Offshore Block Location

The development of the block will be phased with two separate FPSO vessels considering the development of Etan field first and Zabazaba after a period of about 3-4 years.

EPCI: WORKSCOPE

- Project management

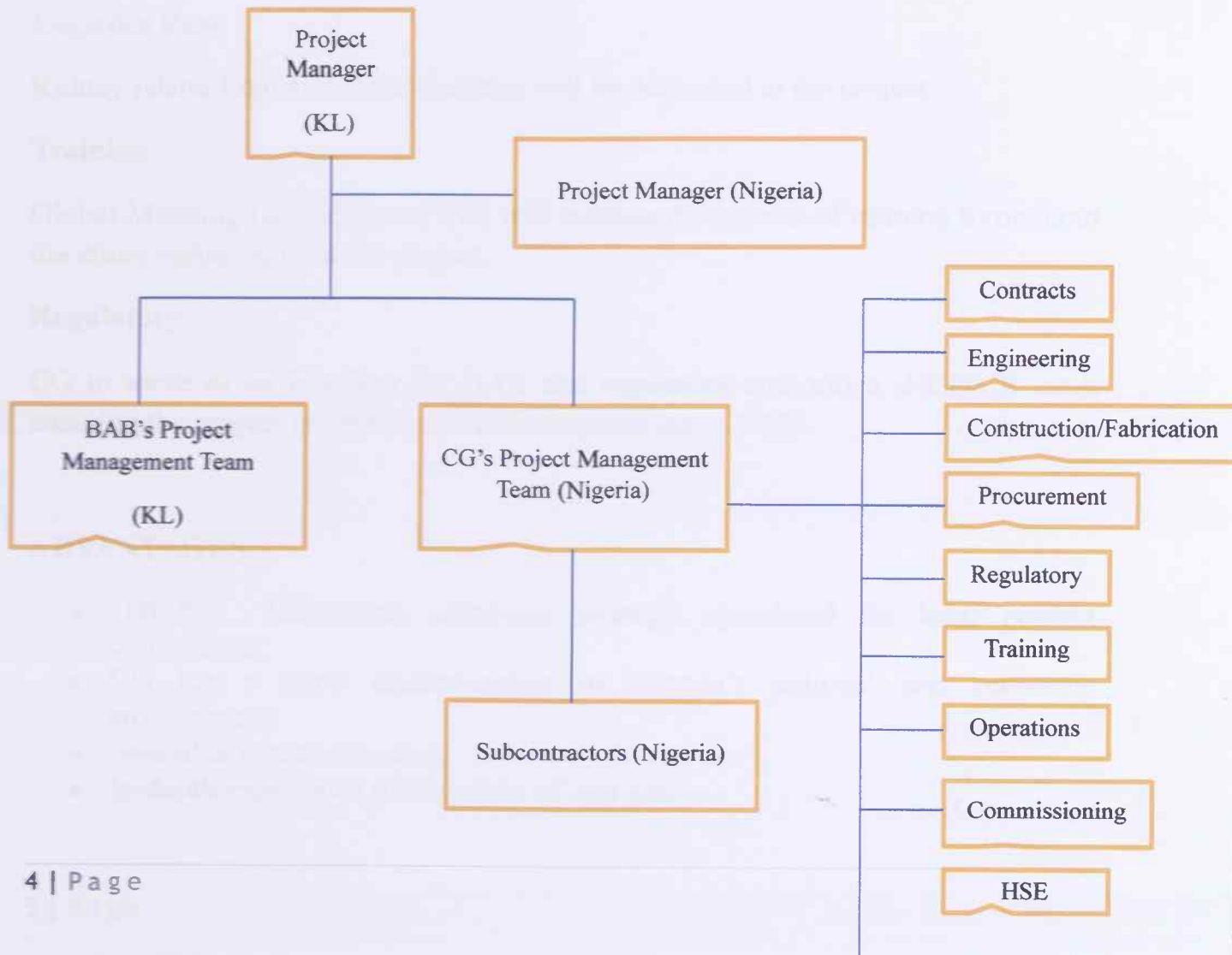
- Procurement of all material/equipment for construction, refurbishment and modification of the FPSO, including transportation, installation, integration, testing pre-commissioning and commissioning
- Detailed engineering for the hull/marine system, topsides, mooring system and offloading system where applicable
- Refurbishment and modification of the hull for life extension, including replacement of damaged or worn out parts, upgrading or replacement of existing equipment where applicable
- Topsides modules modification and upgrading, including new topside modules procurement, fabrication and construction
- Topside modules integration
- Procurement and construction of the complete FPSO mooring system (i.e. anchors and mooring lines), associated components and all equipment required for mooring lines
- FPSO transportation to the site
- Mooring lines installation, hook up and connection to the FPSO
- Provide installation support during umbilicals and risers pull-in an connection to the FPSO
- Installation and integration of the subsea controls system on board the FPSO
- Upgrading of the electrical power generation and distribution systems
- Upgrading of the instrumented control and safety system
- Pre-commissioning, onshore/offshore commissioning of the FPSO system
- Operation and Maintenance services for the FPSO

CENTURY GROUP's PROPOSAL

CG proposes an execution strategy aligned with NCD's stipulations; detailing to the following;

Project Management

This will comprise majorly Nigerians (experienced and professionals); the team will work closely with BAB's designated team to OPL 245.



Organizational structure

Quality

Detailed Engineering

Century Engineering (subsidiary of CG) will work closely with the designated subcontractor (engineering firm); an agreed percentage of the man-hours will be delivered by Century Engineering; this can be either a carved out work-scope or personnel availability.

Procurement

A procurement center will be designated in Nigeria; equipment and services will be procured locally. Unavailable equipment in Nigeria will be procured outside the country ensuring NCD favored procedures.

Logistics Base

Kidney Island Logistics Base facilities will be dedicated to the project.

Training

Global Manning (subsidiary of CG) will manage the aspects of training throughout the entire value chain of the project.

Regulatory

CG to serve as an interface for BAB and regulatory authorities (NCDMB etc.); ensuring the project is carried out to the stipulations of NCD.

ADVANTAGES

- 100 % Indigenous company, strategic spearhead for local content compliance;
- CG has a good understanding of Nigeria's political and economic environment;
- Available human resource;
- In-depth experience of Nigeria's oil and gas.

SUGGESTED NEXT STEP

- Review and discuss proposal with BAB
- Map out next phase strategy

CONCLUSION

- Century Group follows a code of (operational) conduct with our clients, which ensures that we share the same values and principles governing operational efficiency;
- We believe that all our business activities are grounded in compliance with applicable laws;
- We add value to Projects from conceptualization to completion.